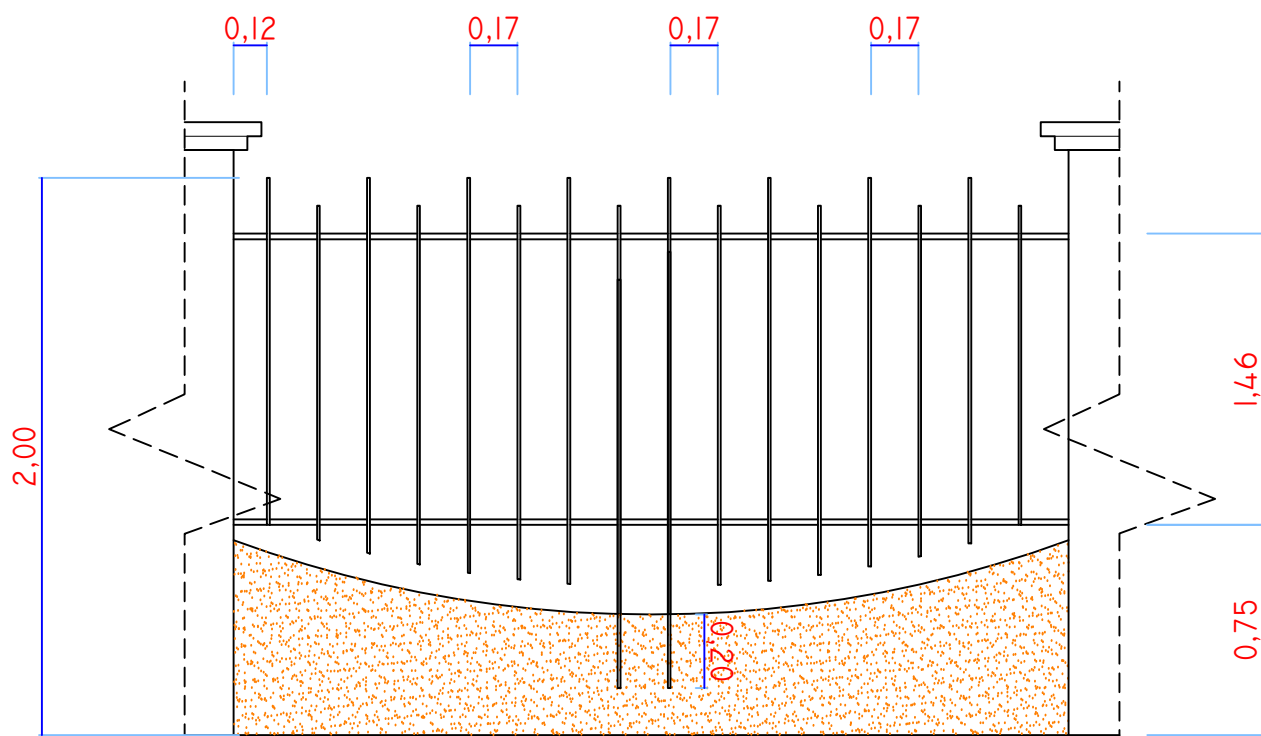


FACHADA Escala 1 / 100

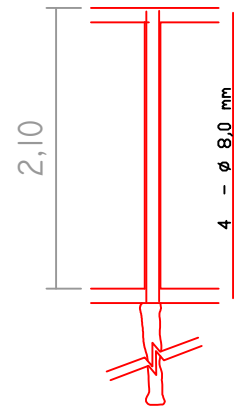
Portão de Entrada De Serviço 6,55 x 2,00 CORRER - Duas Folhas



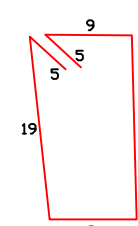
DETALHE GRADIL Sem Escala

Gradil (41 x) A=4,74m² 22 com reforço e 19 sem reforço Metalon Quadrado 20mm x 20mm - Chapa 090 Espasamento 17 cm

PILARES = 0,35 x 0,35 (44 X)

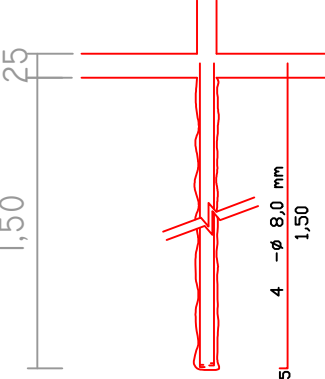


ESTRIBO

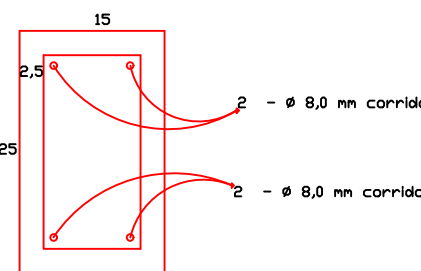


QUANTIDADE = 768 un
Ø = 4,2 mm a cada 20cm
C = 0,66 cm

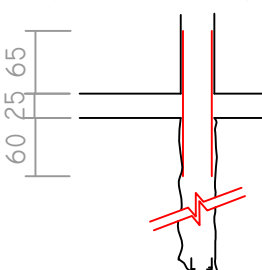
ESTACA BROCA Ø 25cm (44 X)



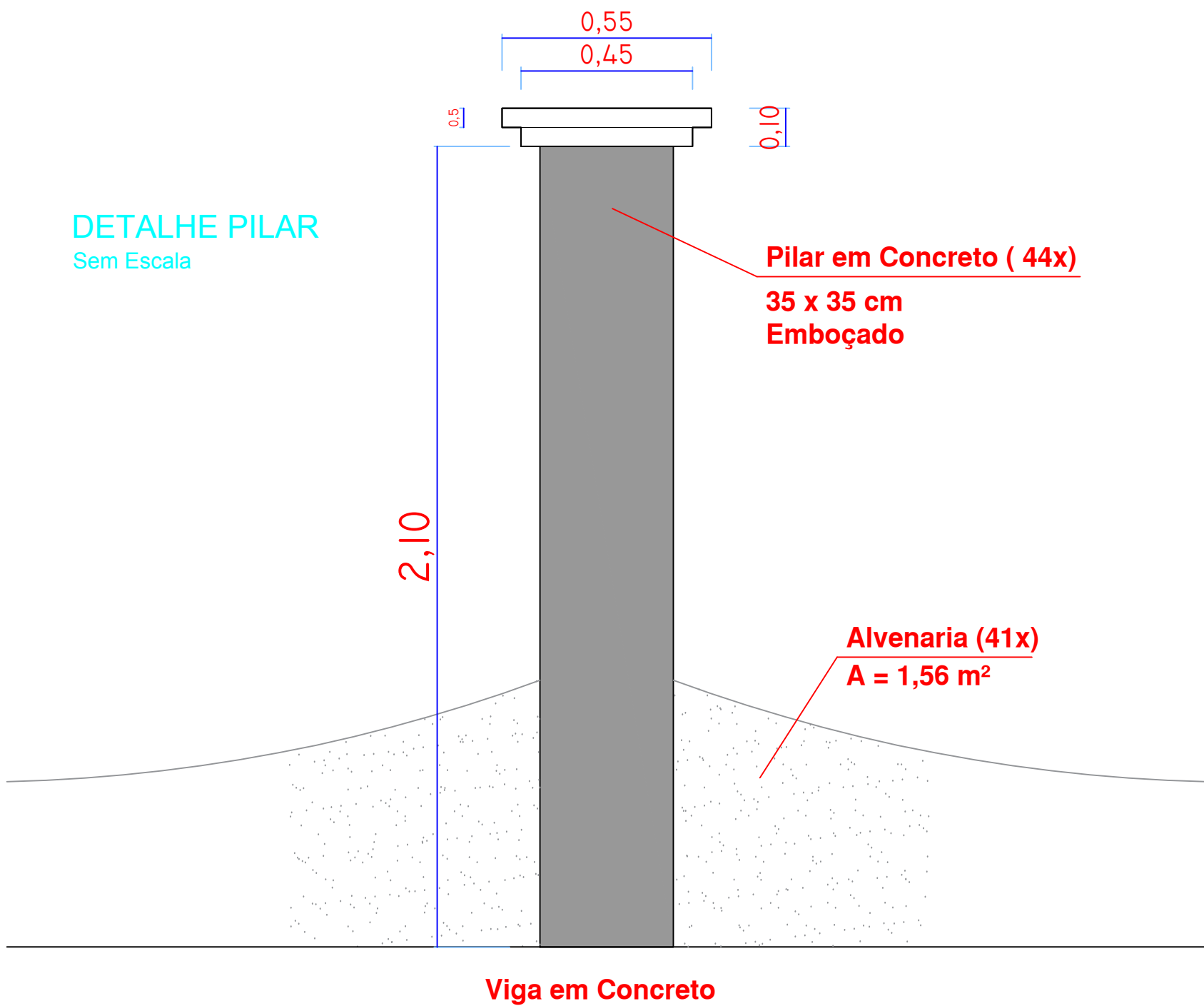
VIGA DE BALDRAME 15 x 25 cm x 153,85



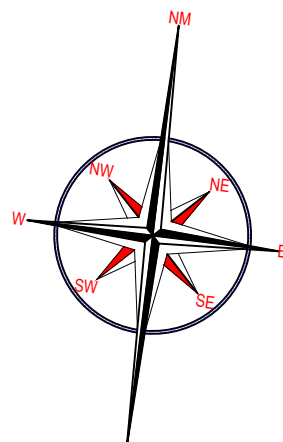
Esperas dos pilares (44 X)



DETALHE PILAR Sem Escala



LOCAÇÃO E SITUAÇÃO ESCALA 1:750



Obra. MURO E GRADIL DO CENTRO DE EVENTOS			
	Proprietário		Reservado Para Carimbos
	PREFEITURA MUNICIPAL DE VENTANIA - PR ADM. PREF. ANTONIO HELLY SANTIAGO CNPJ: 95.685.798/0001-69		
FOLHA	Projeto		
	Muro e Gradil		
01	Locou		
	Rodovia PR 090 - Km 195 + 350m - Ventania -PR		
01	Responsável Técnico		
	IEDO JOSE STIMAMIGLIO Eng° Civil - Crea : 14.315/D-PR		
Data		Escala	Desenho
Junho / 2017		Indicada	JEFFERSON PHILLIPI